



MADE IN EUROPE 2026

ONLINE PITCHING



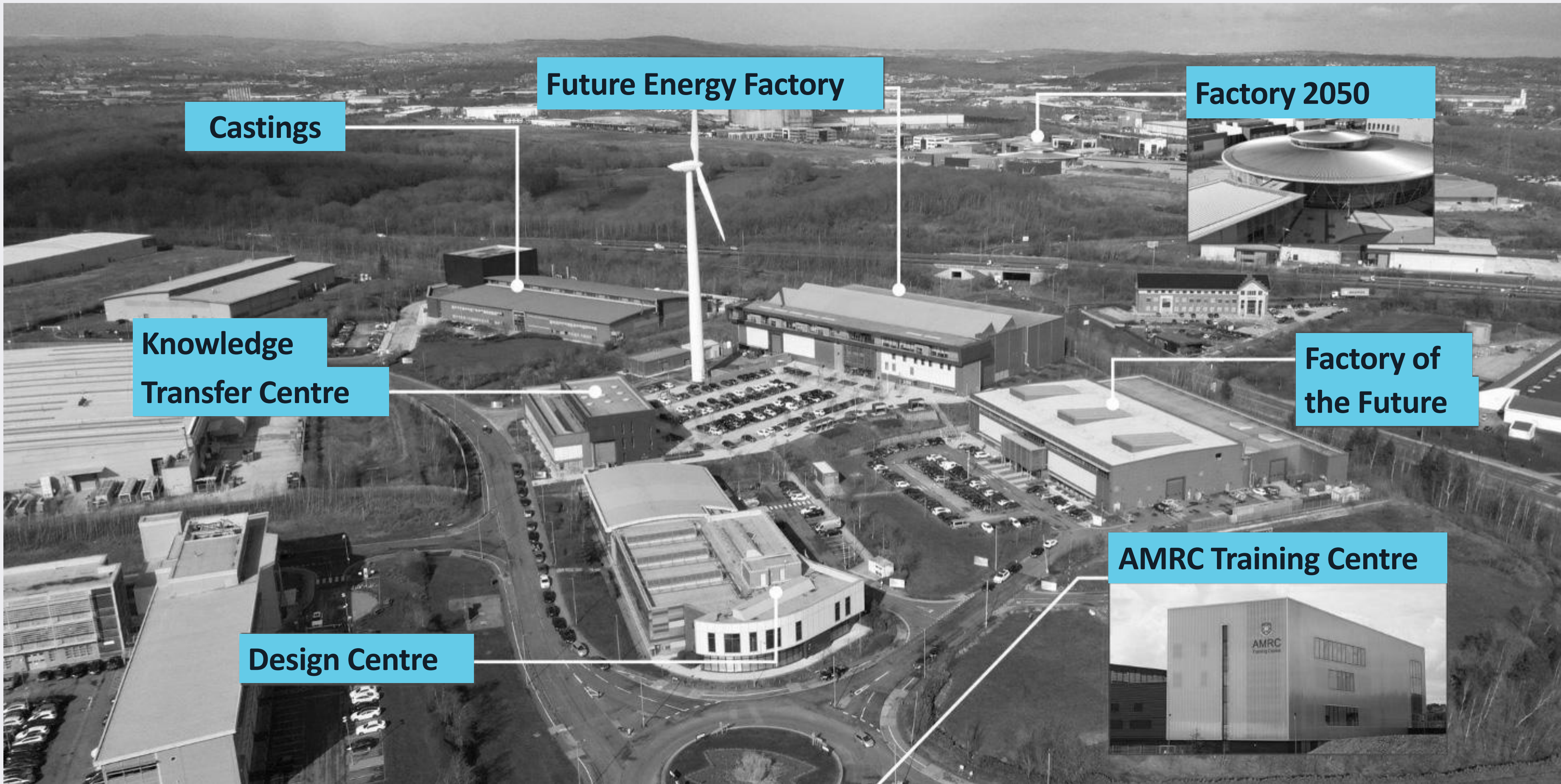
LET'S SHAPE THE FUTURE OF
MANUFACTURING TOGETHER!

23 June 2026

What is the University of Sheffield Advanced Manufacturing Research Centre?



- Established in 2001 as a collaboration between the University of Sheffield and Boeing.
- We work with companies of all sizes – including SMEs, start-ups and large-scale manufacturers – to help them improve their productivity and save time, money and energy.
- We turn the latest world-leading research into huge practical improvements for industry, and de-risk innovation so you don't have to.
- Expertise in additive manufacturing, automation and robotics, castings, composites, design and prototyping, digital manufacturing, structural and materials testing, manufacturing intelligence, subtractive manufacturing, training and skills.



The University of Sheffield AMRC campus in South Yorkshire



AMRC Cymru in Broughton, North Wales

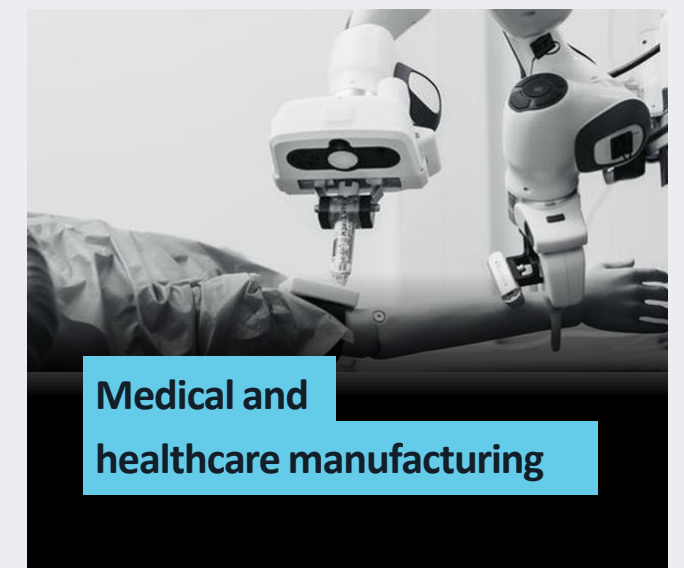
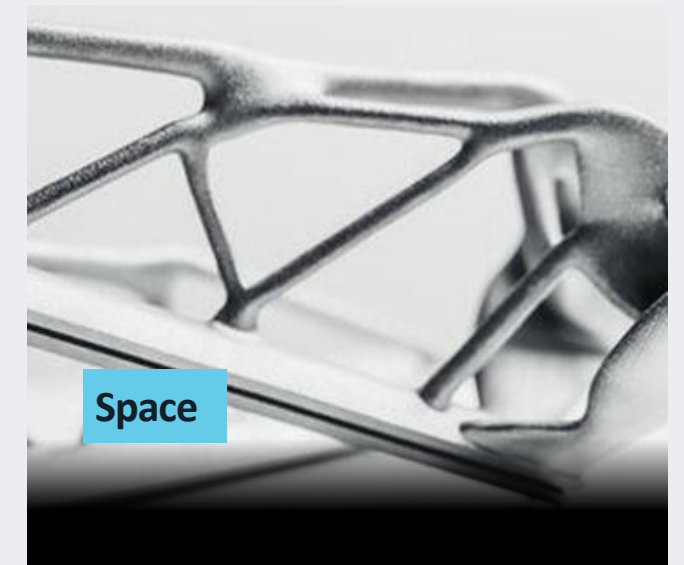
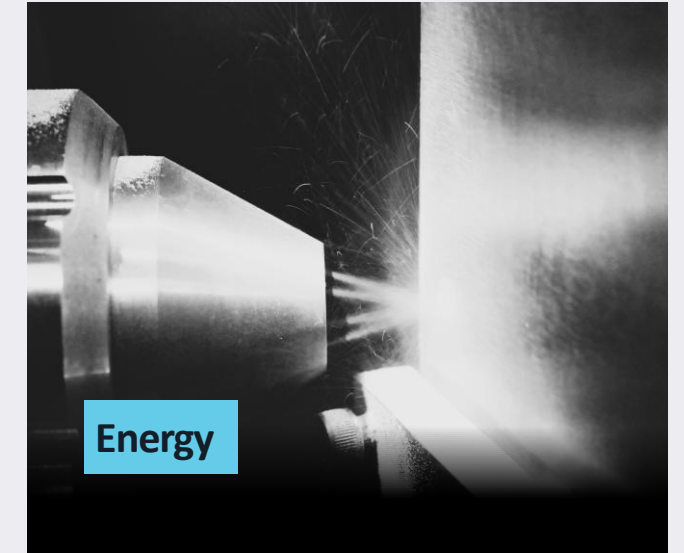
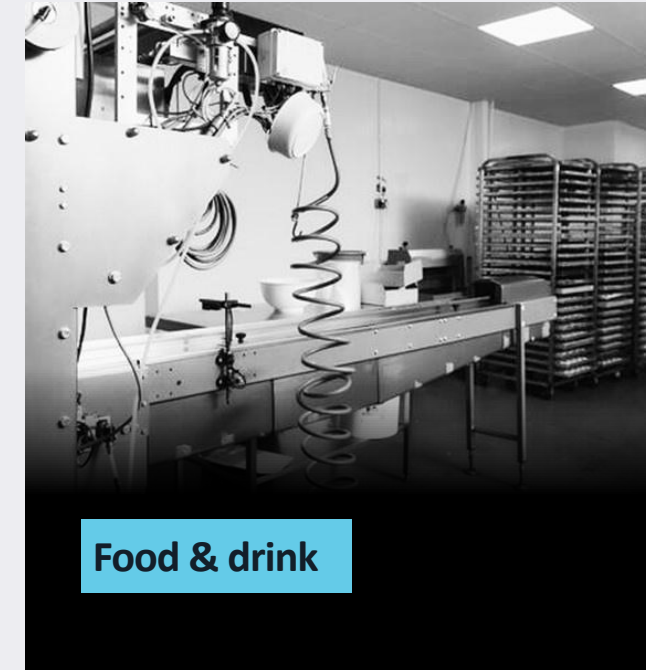
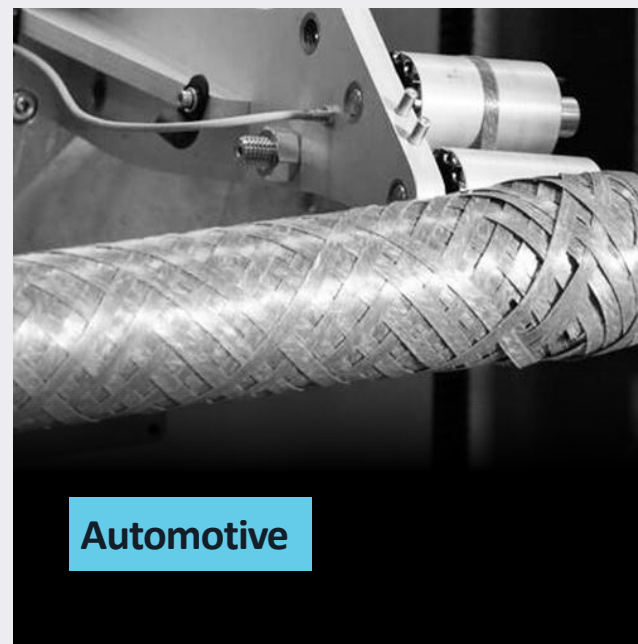


AMRC North West in Preston, Lancashire

Sectors

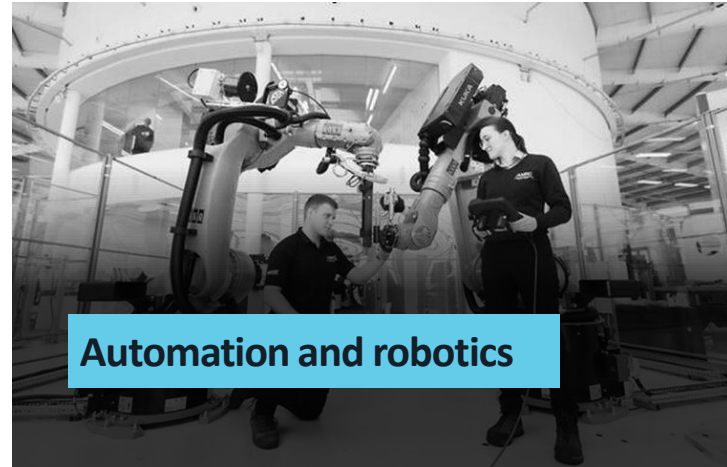
The AMRC applies its knowledge and delivers impact across a wide range of sectors including aerospace, automotive, construction, food and drink, healthcare and medical and space.

To help facilitate this we have a number of sector leads who act as a focal point for enquiries and help to coordinate any resulting work.





Additive manufacturing



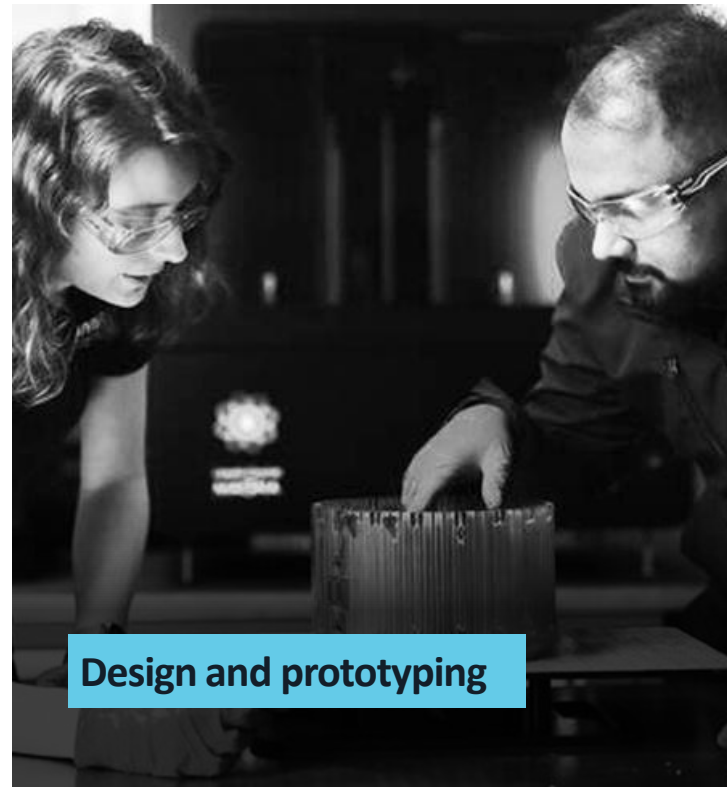
Automation and robotics



Castings



Composite manufacturing



Design and prototyping



Digital manufacturing



Manufacturing intelligence



Nuclear manufacturing



Subtractive manufacturing

Capabilities

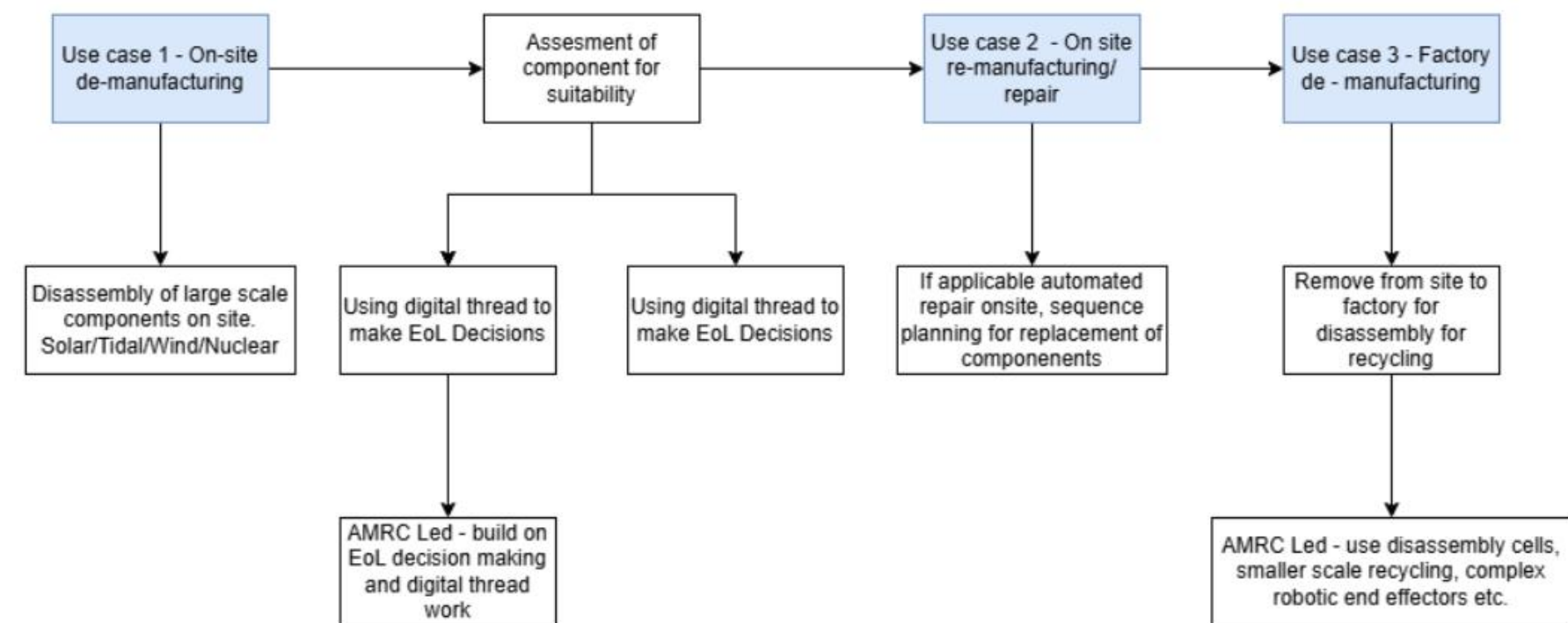
Our research is organised into a number of key capabilities.

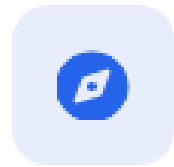
Our capabilities span our sites in Rotherham, Sheffield, Broughton and Preston.

Factory processes and automation for de- and re-manufacturing (RIA)

We are developing digital tools that use through-life data to make decisions about product treatment during its lifecycle, and demonstrating platforms for exploitation of this data.

- **Primary Objective:** Develop a data-driven methodology that optimises maintenance and disassembly schedules for time and cost.
- **Technical Approach:** Record through-life data in challenging environments, using this to decide on and demonstrate appropriate treatments.
- **Societal Impact:** Reduced GHG emissions through reduced material usage, and enhancements to safety through automated inspection/repair in challenging environments.

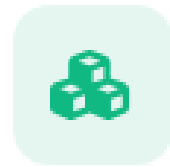




Project Vision

WHAT WE WANT TO DO

- Build a robust, generalizable, data collection and analysis framework.
- Demonstrate optimized decision making across multiple assemblies or sub-assemblies.
- Show how these decisions translate to real-world applications through the use of robotics for re-(de-)manufacturing.



Our Expertise

WHAT WE OFFER

- World-leading knowhow in connectivity, data management and modelling.
- State-of-the-art facilities for the demonstration of off-site robotic disassembly techniques.
- Wide technical expertise, and open access capital equipment.
- Project leadership experience across large programs.



Partners Sought

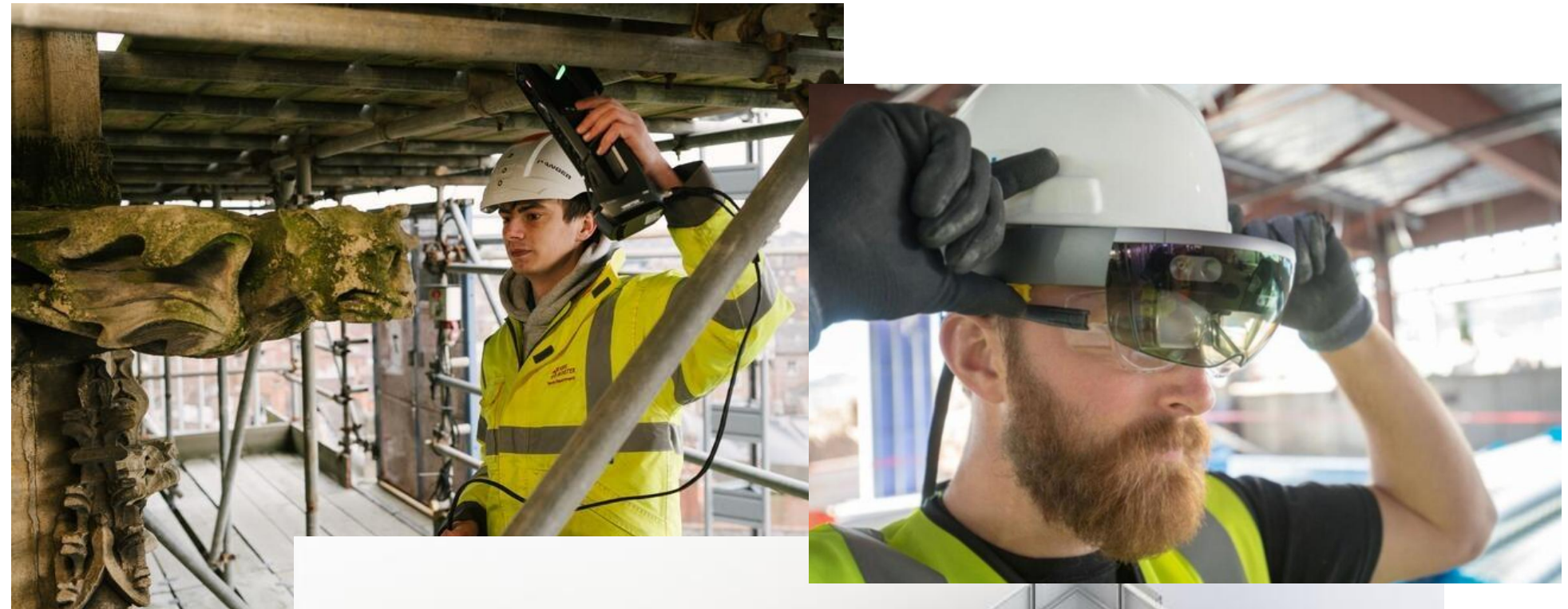
WHAT WE SEEK

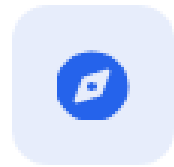
- End users able to provide use cases for on- and off-site re-(de-)manufacturing.
- Technology providers able to translate the developed concepts into real-world applications.
- Academic partners with key enabling technologies.

On-site robotic and automated techniques for building renovation and new construction

We are seeking to boost productivity in the construction industry by enabling the wider adoption of robotics and digital technologies.

- **Primary Objective:** Enable a rate increase in new building construction to meet growing population demands.
- **Technical Approach:** Apply robotics and digital manufacturing techniques developed with other sectors to on-site construction.
- **Societal Impact:** Future housing, industrial and services needs are met in an economically and environmentally sustainable way.

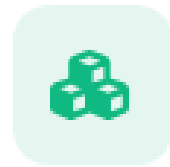




Project Vision

WHAT WE WANT TO DO

- Develop integrated automated solutions for on-site construction.
- Demonstrate the application of frontier robotics and AI techniques to construction applications.
- Transfer knowledge from other sectors (and academia) into the construction sector.



Our Expertise

WHAT WE OFFER

- World-leading knowhow in connectivity, data management and modelling.
- State-of-the-art facilities for the demonstration of robotic assembly and inspection.
- Decades of automation experience across multiple sectors, including the ability to produce CE-standard automation.
- Pre-existing relationships with the construction sector.



Partners Sought

WHAT WE SEEK

- Existing consortia that require partners for mid-TRL robotics development.



THANK YOU

Contact:

Stephen Hallam-Bowles – s.bowles@amrc.co.uk

amrc.co.uk